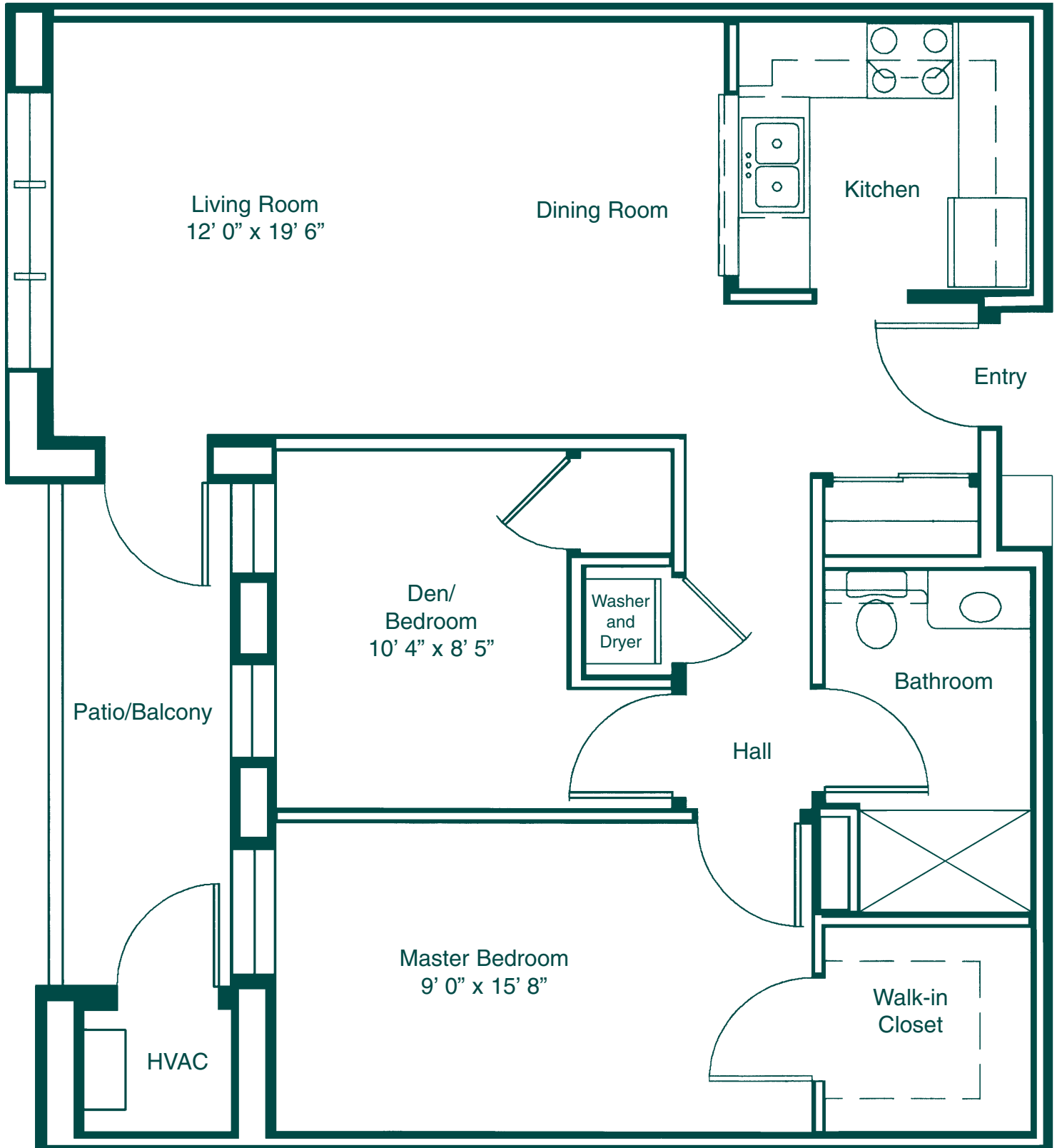


REDWOOD

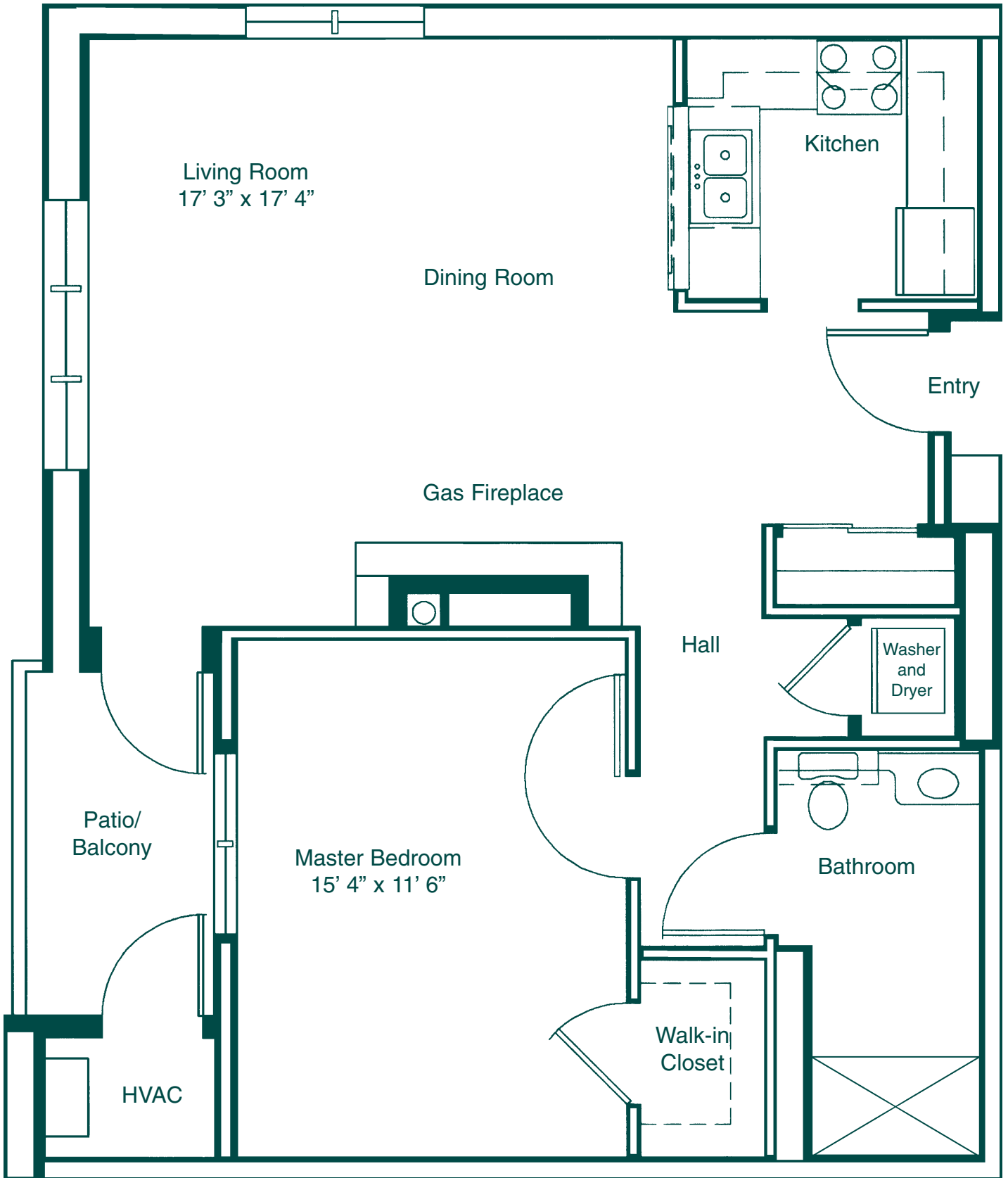
One Bedroom plus Den Apartment with Patio or Balcony.



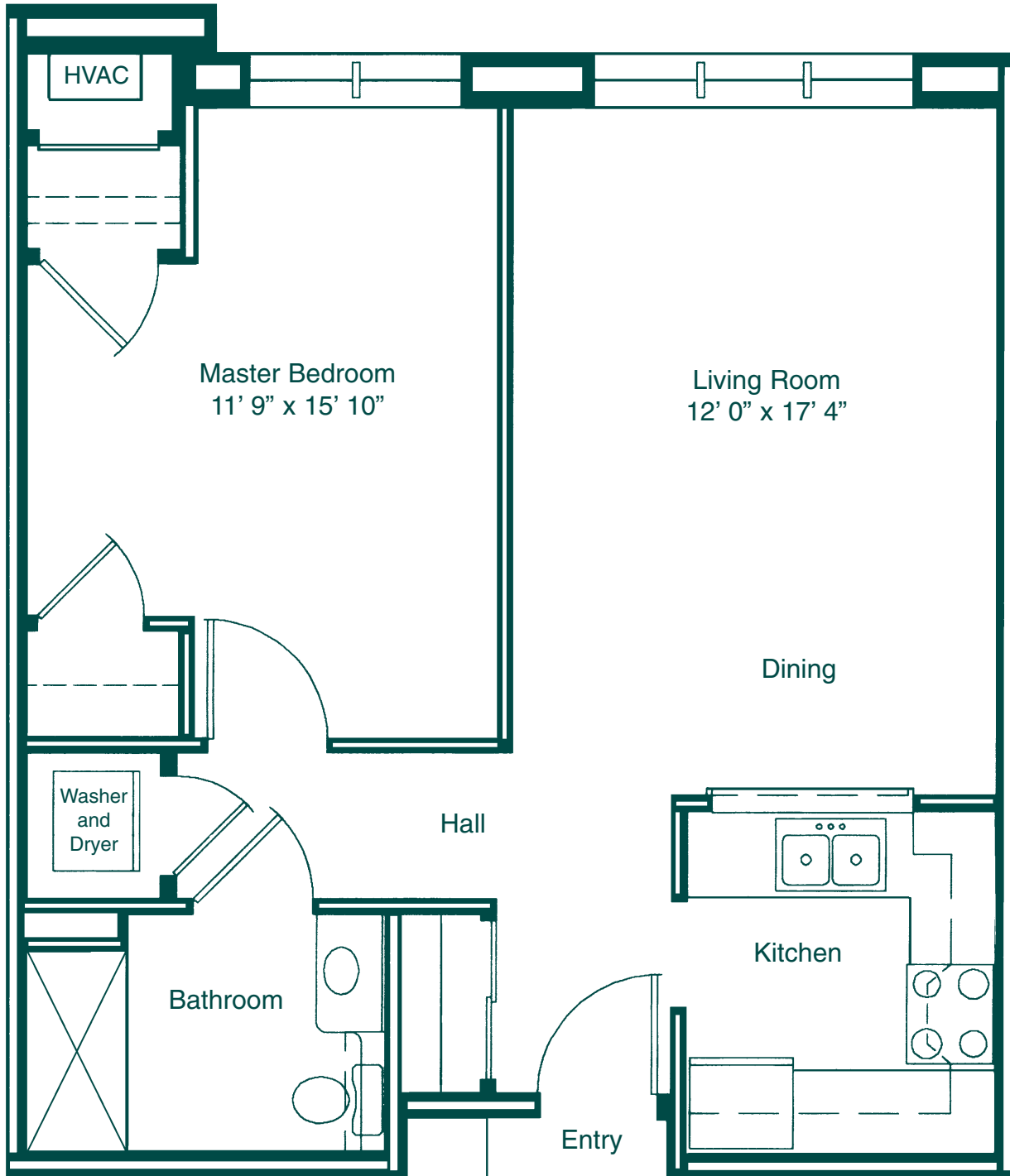
1/4" = 1 foot
Dimensions are approximate.

SILVER MAPLE

One Bedroom Apartment with Patio or Balcony and Gas Fireplace



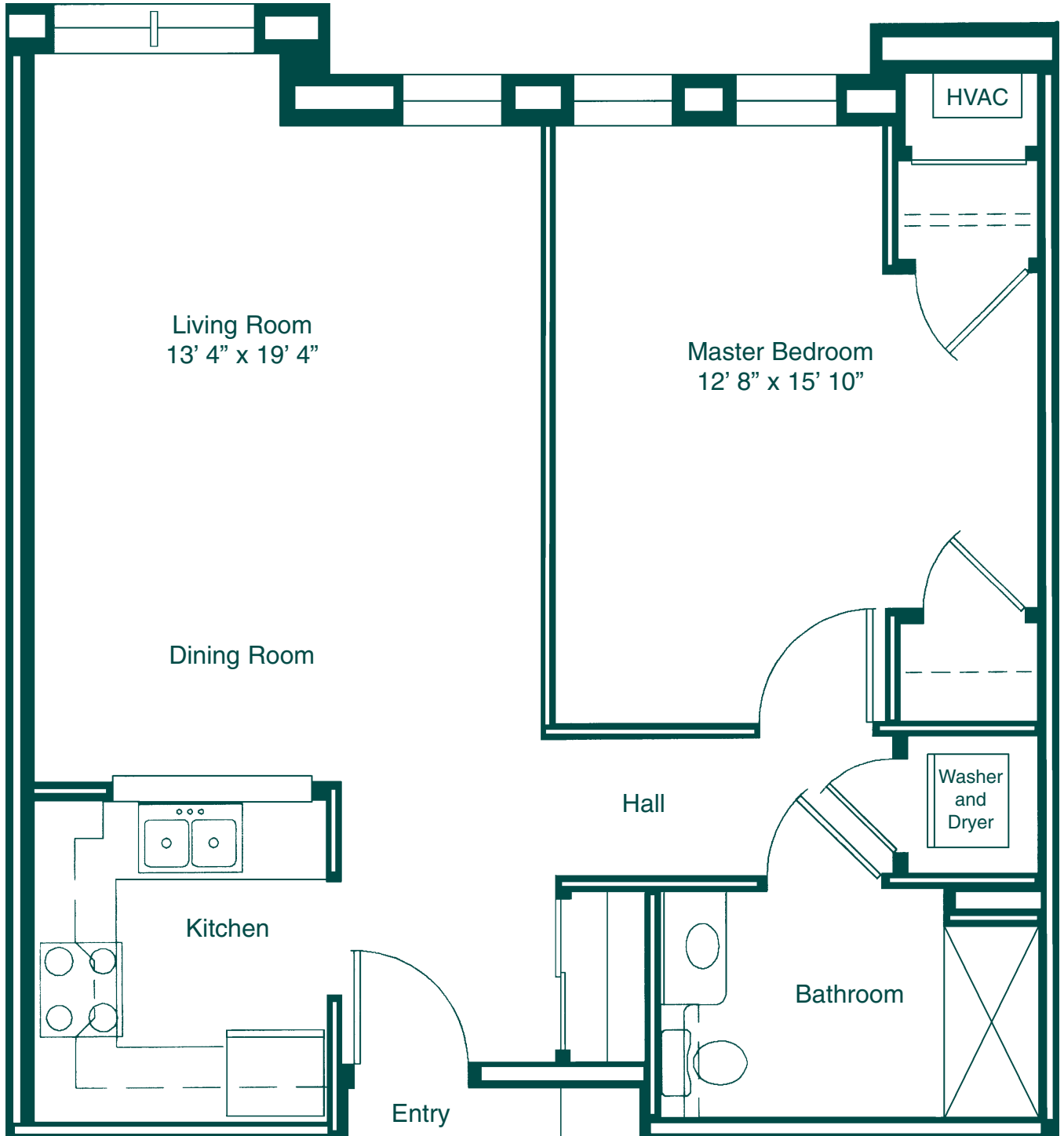
1/4" = 1 foot
Dimensions are approximate.



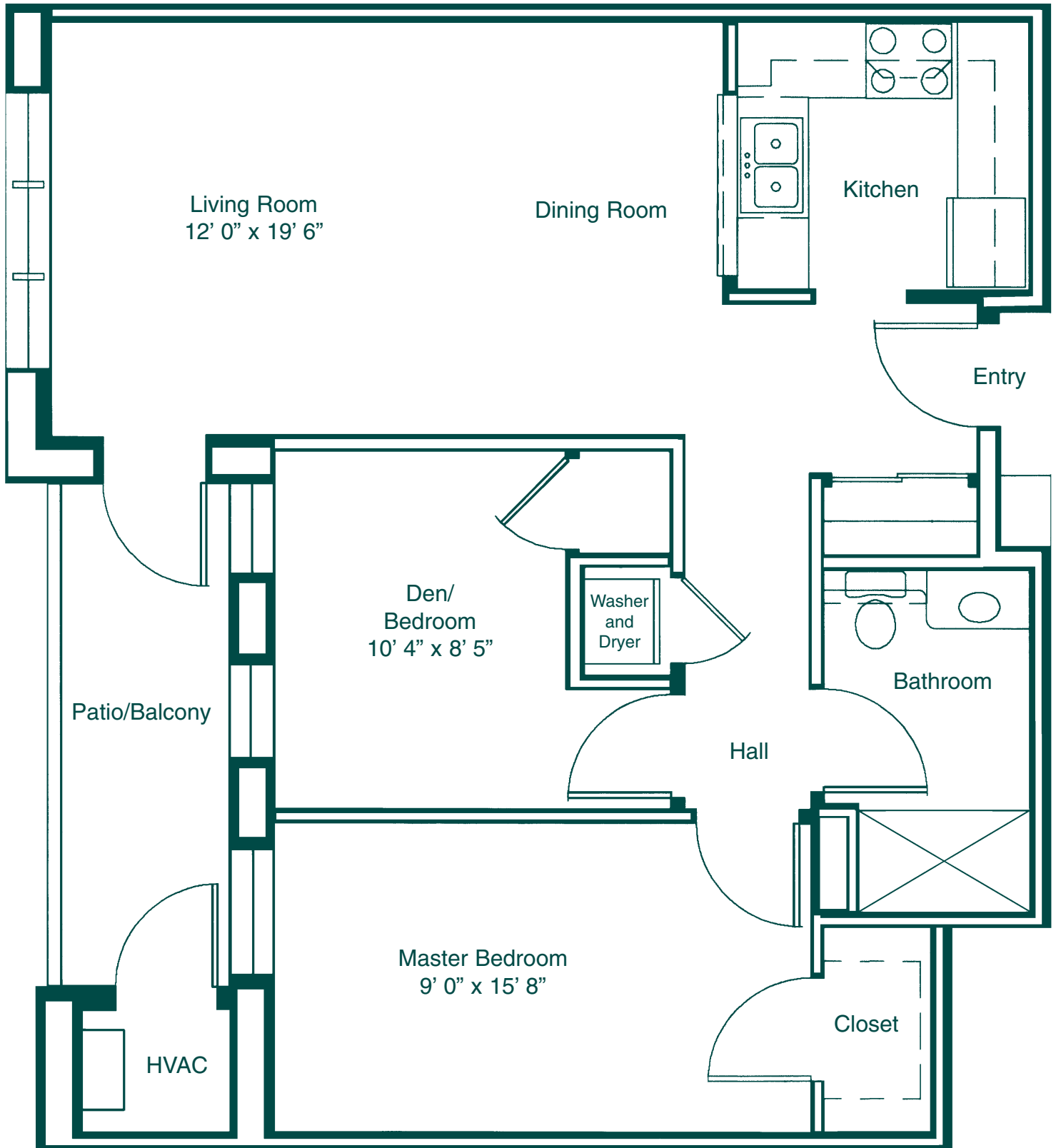
1/4" = 1 foot
Dimensions are approximate.

B I R C H

One Bedroom Apartment



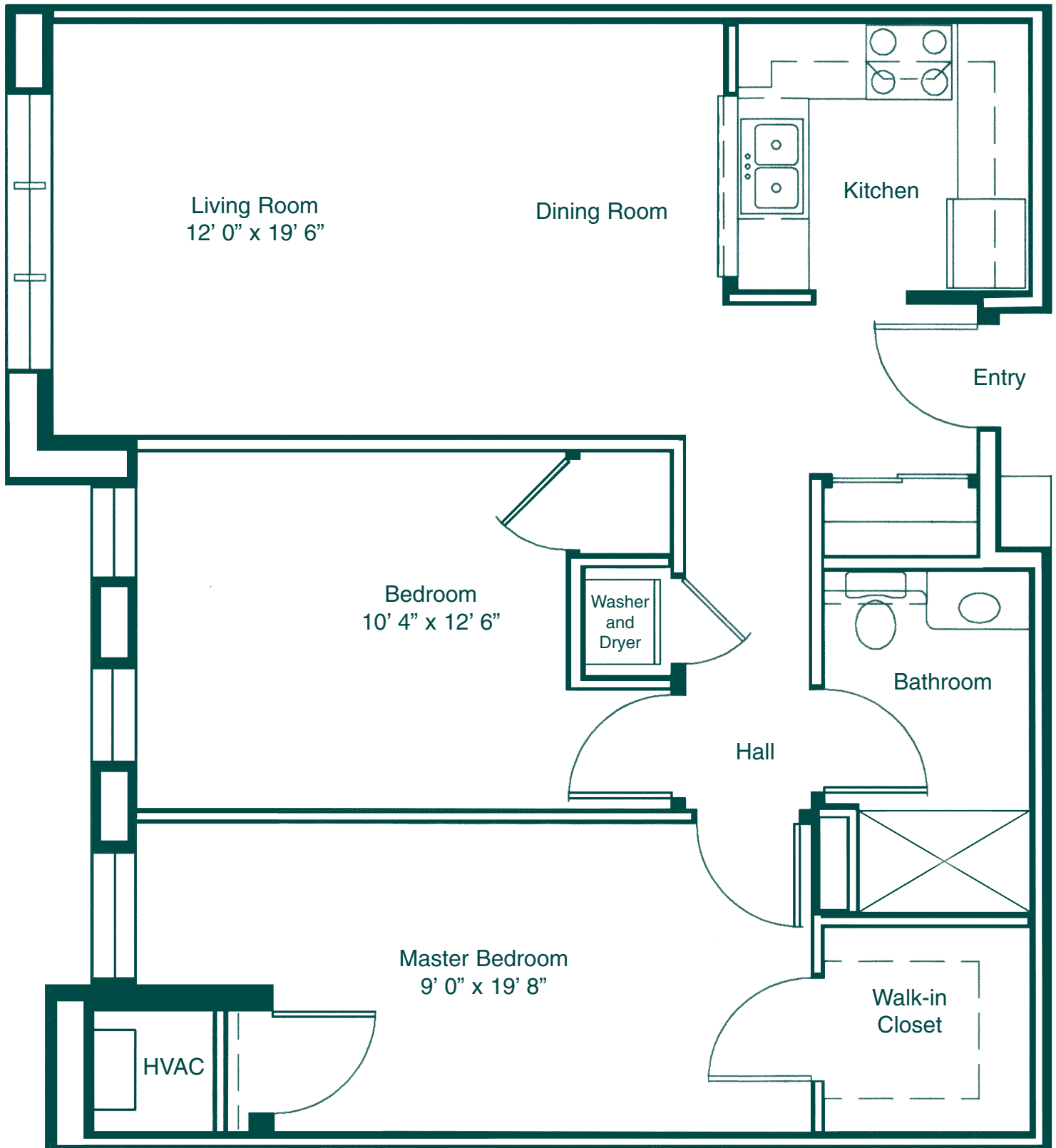
1/4" = 1 foot
Dimensions are approximate.



1/4" = 1 foot
Dimensions are approximate.

P I N E

Two Bedroom Apartment.



1/4" = 1 foot
Dimensions are approximate.

Apartment Features

- Spacious apartment homes complete with wall-to-wall carpeting
- Fully equipped, all electric kitchens with frost-free refrigerator, oven, range, and dishwasher
- Patio/balcony and gas fireplace in select apartment style
- Individually controlled heating and air conditioning
- 24-hour emergency call system
- Washer and dryer in each apartment
- Pre-wired for telephone and cable television
- Smoke detectors & fire sprinklers
- Fire and sound-resistant construction
- Mini-blind window treatments

Resident Services

- Choice of lunch or dinner each day served in our beautiful dining room
- All utilities included except for telephone and cable television
- Weekly housekeeping service
- Scheduled courtesy transportation
- 24-hour security
- Social, cultural, educational, and recreational programs
- 24-hour emergency response
- Comprehensive maintenance of apartments, buildings & grounds
- Priority access to all levels of care

Community Features

- Beautiful dining room & private dining room
- Library
- Multi-purpose rooms for activities and worship services
- Creative arts studio
- Fitness/Wellness center
- Country store & gift shop
- Computer center
- Beauty salon & barber shop
- Landscaped courtyards, gazebo, pond, walking paths & picnic area
- Outdoor garden areas & patio
- Garages with additional storage available to residents for an additional fee
- Ample resident & guest parking
- Guest suite for visitors
- Centrally located elevators
- Individual storage areas

The  *Greenfield*
MANOR

5953 Broadway ♦ Lancaster, New York 14086
Telephone (716) 684-8400 Fax (716) 684-8480
www.niagaralutheran.org or www.tlch.org

