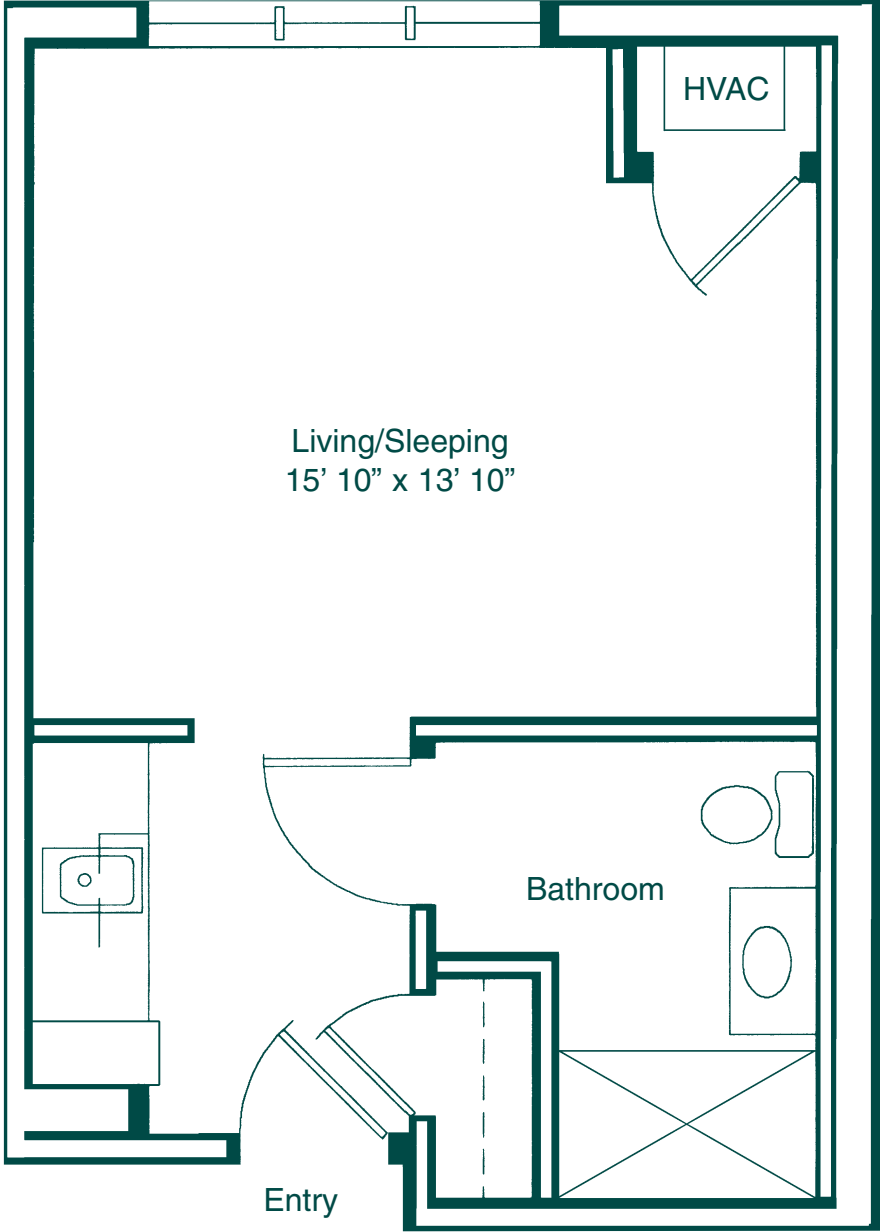
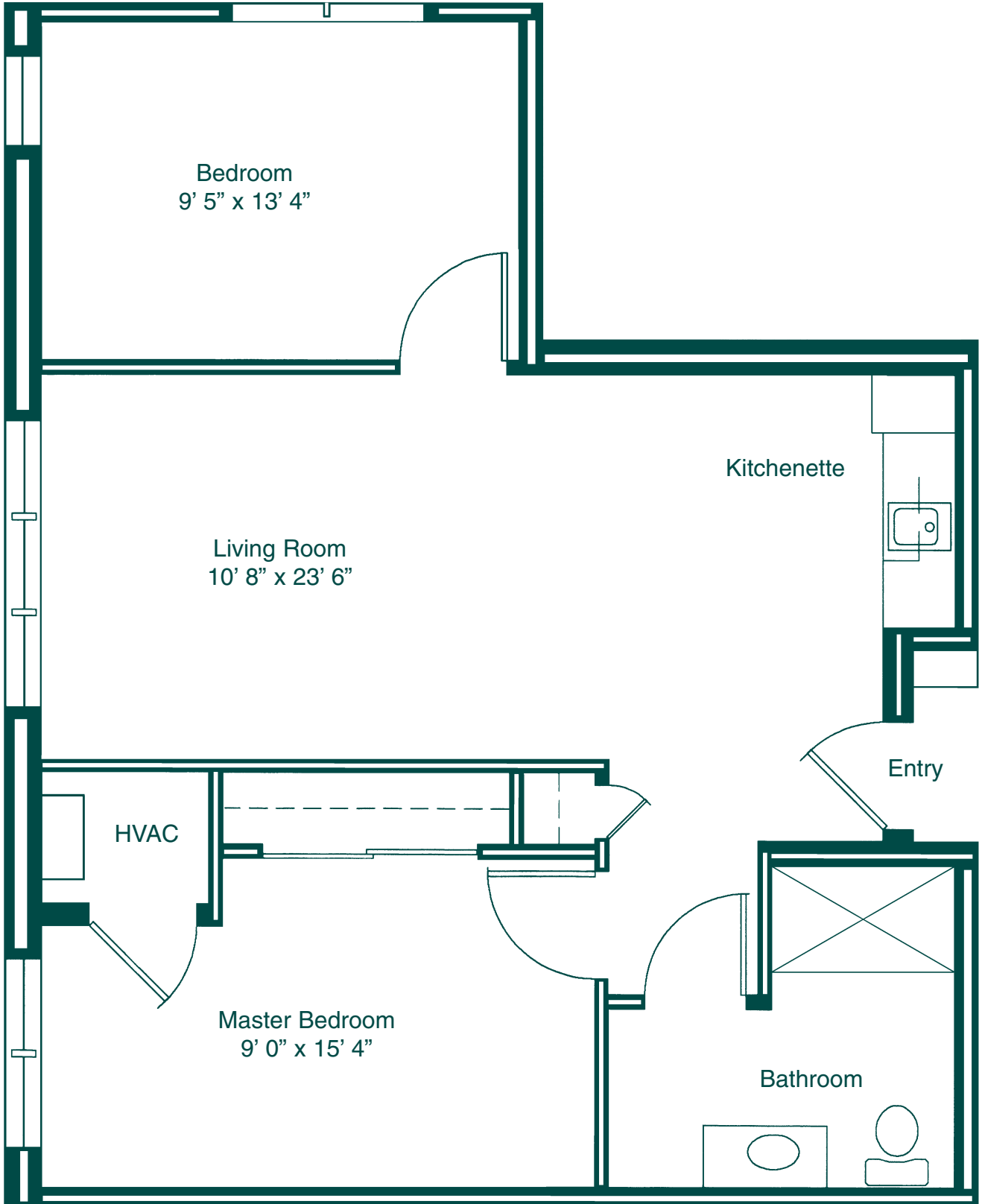


**B L U E   S P R U C E**   *Studio Apartment*



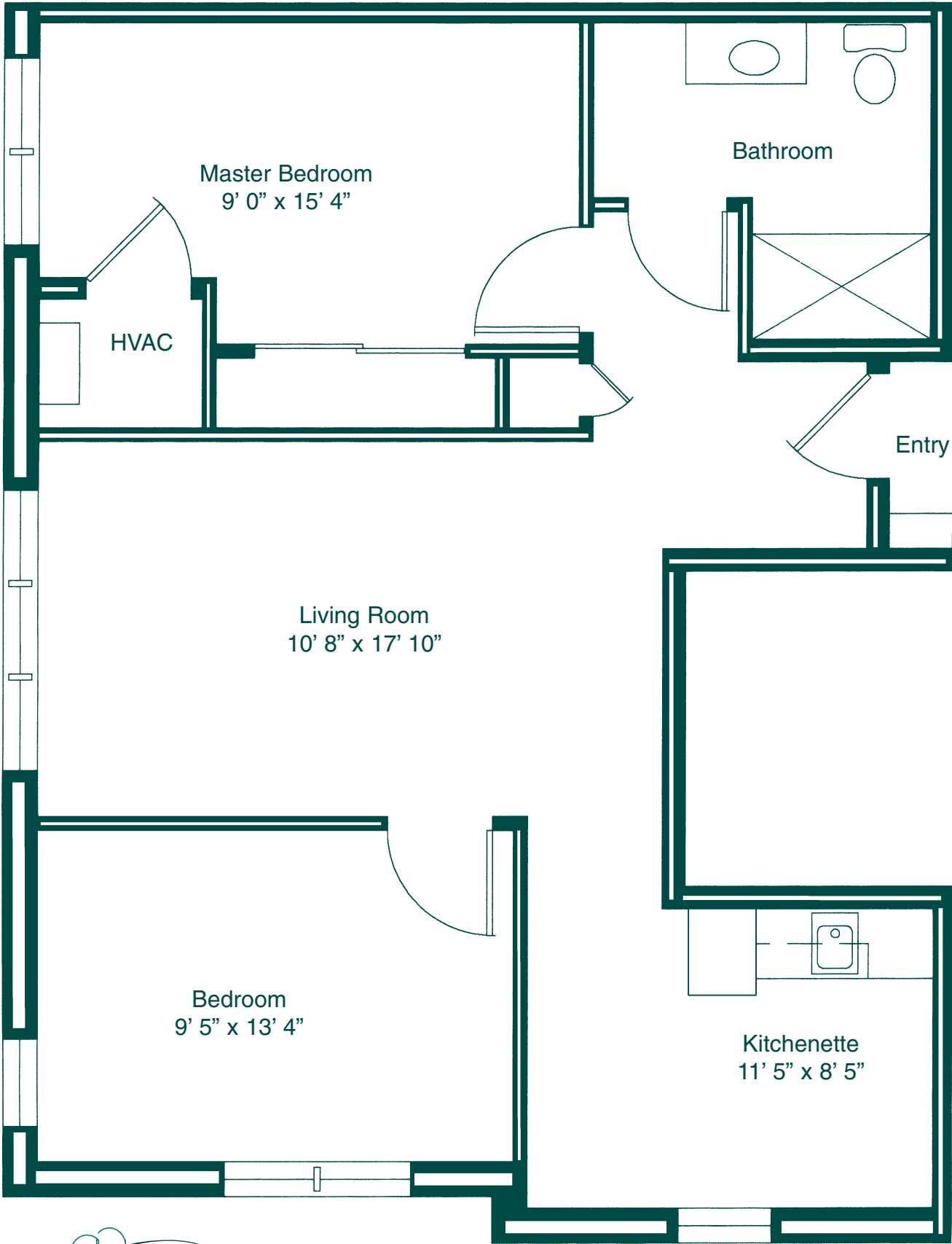
1/4" = 1 foot  
Dimensions are approximate.

MAGNOLIA 1 *Two Bedroom Apartment*



1/4" = 1 foot  
Dimensions are approximate.

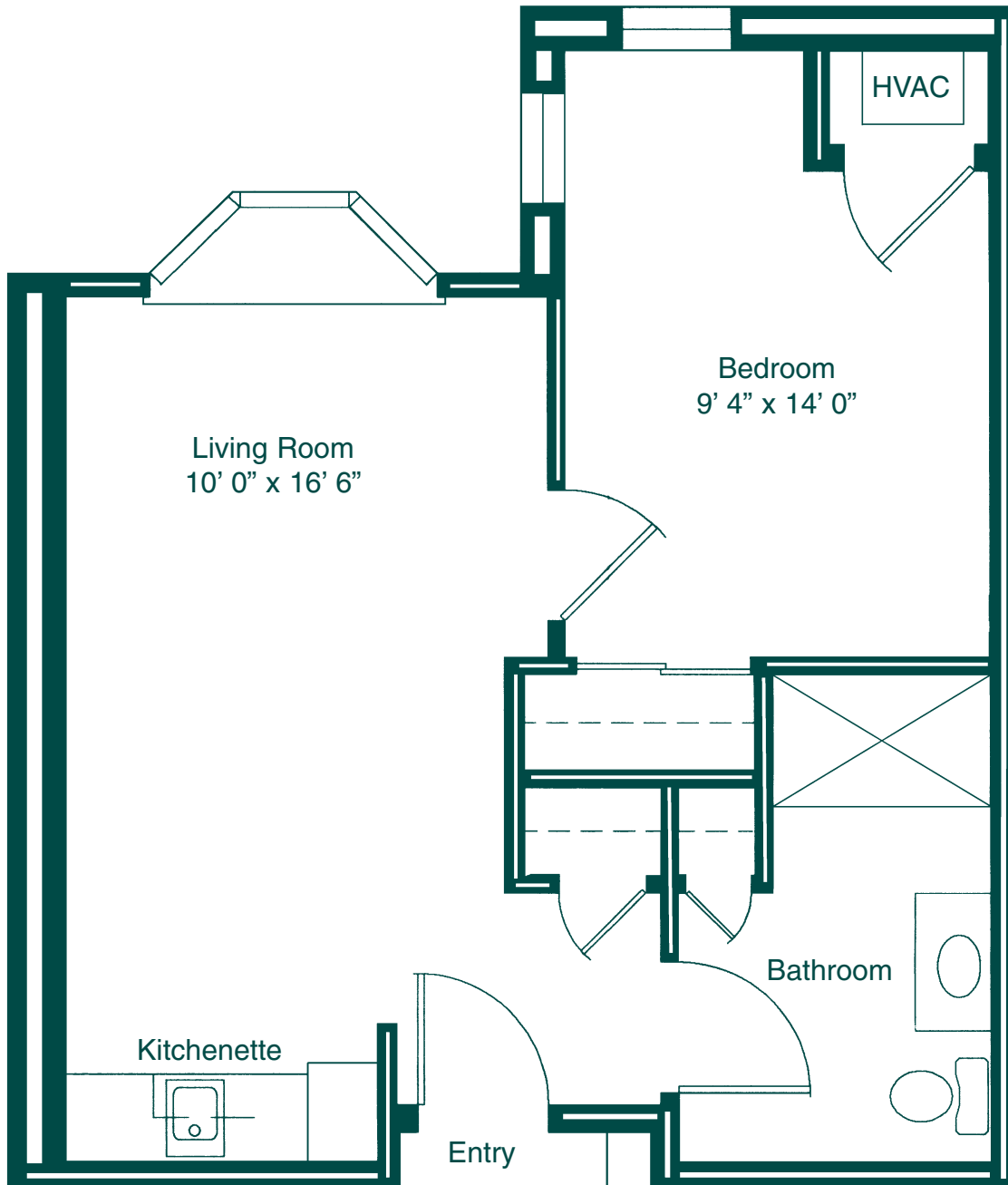
MAGNOLIA 2 Two Bedroom Apartment



1/4" = 1 foot  
Dimensions are approximate.

L I L A C

One Bedroom Apartment with Bay Window



1/4" = 1 foot  
Dimensions are approximate.

  
COURT

## Apartment Features

- Spacious apartment homes complete with wall-to-wall carpeting
- Kitchenette equipped with refrigerator, sink and microwave
- Individually controlled heating and air conditioning
- Pre-wired for telephone and cable television
- 24-hour emergency call system
- Private bath with walk-in shower
- Smoke detectors & fire sprinklers
- Mini-blind window treatments
- Handicap accessibility

## Resident Services

- Three nutritious meals per day served in our beautifully appointed dining room
- All utilities included except for telephone and cable television
- Weekly housekeeping service
- Weekly laundry service
- 24-hour assistance with daily-living activities
- Scheduled courtesy transportation
- Social, cultural, educational, and recreational programs
- 24-hour security
- 24-hour emergency response
- Comprehensive maintenance of apartments, buildings & grounds
- Priority access to all levels of care

## Community Features

- Beautiful dining room & private dining room
- Library
- Multi-purpose rooms for activities and worship services
- Creative arts studio
- Fitness/Wellness center
- Country store & gift shop
- Computer center
- Beauty salon & barber shop
- Landscaped courtyards, gazebo, pond, walking paths & picnic area
- Outdoor garden areas & patio
- Ample parking
- Guest suite for visitors
- Centrally located elevators

# *The* Greenfield COURT

5953 Broadway ♦ Lancaster, New York 14086  
Telephone (716) 684-8400 Fax (716) 684-8480  
[www.niagaralutheran.org](http://www.niagaralutheran.org) or [www.tlch.org](http://www.tlch.org)

